

PIPE SUPPORTS WITH AND WITHOUT COLLAR



Specifically designed to ensure a correct insulation thickness where joints are made.

The PIR central section, which covers the whole circumference and is attached to two K-FLEX insulating material sections, ensures a perfect continuity of the vapour barrier. Longitudinal sealing is obtained by means of the self-adhesive overlap. The external cover is in PVC. The support is also available with a collar and a special metal support which, when fixed to the supporting framework, ensures greater overall installation stability.

Measurements:

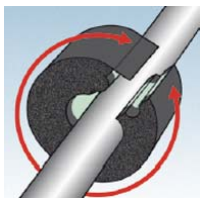
Thicknesses mm: 13, 19, 25, 32

Tube diameter mm: from 18 to 160; inches: from 3/4" to 5"

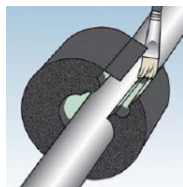
Technical Characteristics	
Central section in PIR	Density 120 kg m ³
Compression resistance	1350 kPa

Temperature range	-45°C +105°C
Thermal conductivity	λ 0,036 W/(m•K) a 0°C
Maximum stockage time	1 year
Colour	Black
Permeability to vapour	μ 7000
Diameter and thickness tolerance	+1 mm / +/- 1 mm

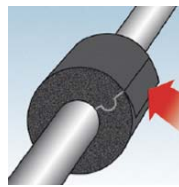
The insulating supports are also available in K-FLEX ECO, SOLAR, AL CLAD, COLOR, in the same measurements as those indicated for K-FLEX ST.



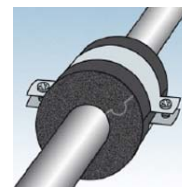
1 - Place the insulating support around the pipe.



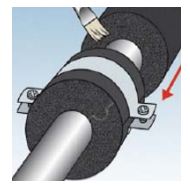
2 - Spread K-FLEX adhesive onto the half-collars.



3 - Seal lengthways using the adhesive overlap.



4 - Fix the collar around the support.



5 - Glue the support to the insulating material.