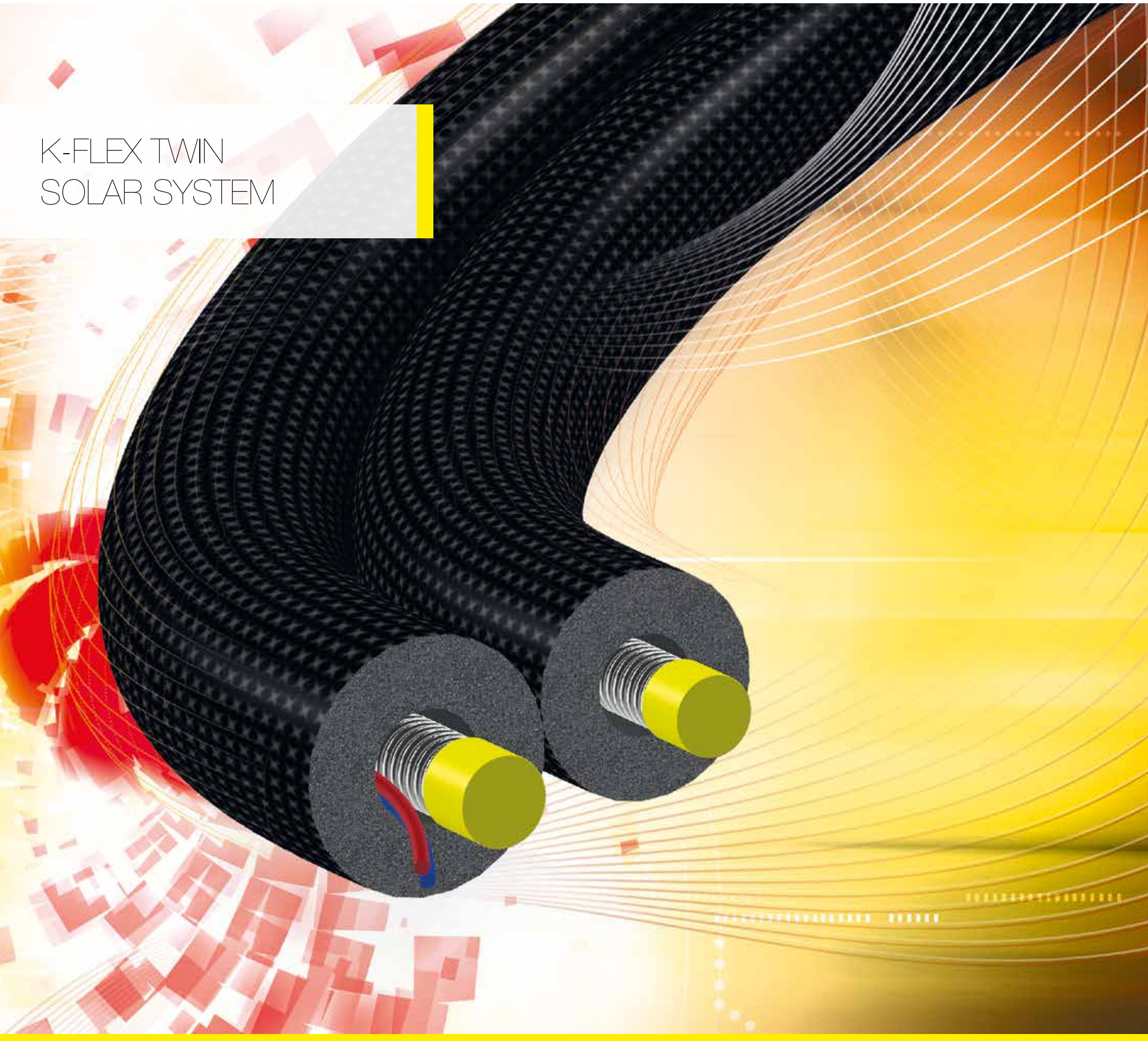


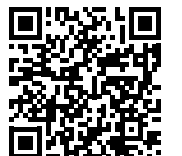
K-FLEX TWIN
SOLAR SYSTEM



K-FLEX TWIN SOLAR SYSTEM

- ▶ COMPLETE RANGE OF INSULATION PRODUCTS
- ▶ FAST & EASY INSTALLATION
- ▶ UV RESISTANT
- ▶ MINIMISES HEAT LOSS

> Site <



K-FLEX ▶ TWIN SOLAR SYSTEM



The convenient solution for solar panels and industrial processes.

Recommended for solar panels and and low pressure steam or industrial process.

K-FLEX SOLAR R is available in rolls, standard cartons, and half cartons.

TECHNICAL DATA ▶ K-FLEX SOLAR R



Property	Value	Test method
Temperature range	From -40°C to +150°C	EN 14706 EN 14707
Thermal conductivity λ W/(m•K)	0 °C = 0,040	EN 13787 EN ISO 8497
Fire	Euroclass E	EN 13501-1
UV resistance	Good	EN 13859-1

K-FLEX reserves the right to change data and technical requirements without notice.

RANGE ▶ K-FLEX SOLAR R

	INSULATION THICKNESS	TUBE DIAMETER						Length
		12 mm	15 mm	18 mm	22 mm	28 mm	35 mm	
K-FLEX SOLAR R Roll	14 mm				•	•	•	
K-FLEX SOLAR R Roll	20 mm		•	•	•	•	•	
K-FLEX SOLAR R Standard Carton	14 mm				•	•	•	2 m
K-FLEX SOLAR R Standard Carton	20 mm	•	•	•	•	•	•	2 m
K-FLEX SOLAR R Half Carton	14 mm				•	•	•	2 m
K-FLEX SOLAR R Half Carton	20 mm	•	•	•	•	•	•	2 m

K-FLEX ▶ TWIN SOLAR SYSTEM



UV resistant covering offers high mechanical resistance

K-FLEX SOLAR HT high temperature elastomeric insulation

PACKAGING ▶ K-FLEX SOLAR R

▶ ROLLS



600 mm x 600 mm x 405 mm

▶ STANDARD CARTON



390 mm x 320 mm x 2100 mm

▶ HALF CARTON



390 mm x 155 mm x 2100 mm

K-FLEX ▶ TWIN SOLAR SYSTEM



K-FLEX TWIN SOLAR SYSTEM is a solar thermal insulation system which is resistant to high temperatures. It facilitates the connection of a hot water tank to a solar panel; it is designed to minimise heat loss and be resistant to chemicals and weather.

TECHNICAL DATA ▶ K-FLEX SOLAR R

Property	Value	Test method
Temperature range	From -40°C to +150°C	EN 14706 EN 14707
Thermal conductivity λ W/(m•K)	0 °C = 0,040	EN 13787 EN ISO 8497
Fire	Euroclass E	EN 13501-1
UV resistance	Good	EN 13859-1

K-FLEX reserves the right to change data and technical requirements without notice.

TECHNICAL DATA ▶ ANULAR FLEXIBLE STAINLESS STEEL TUBE

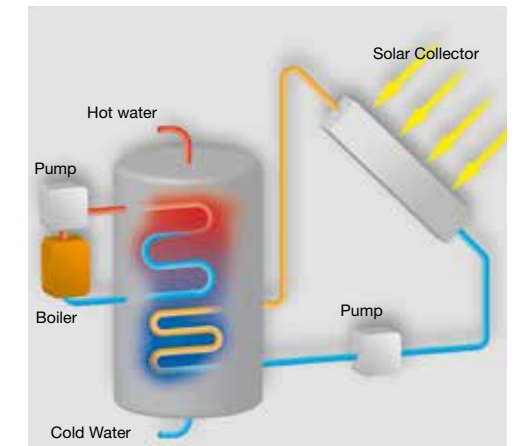
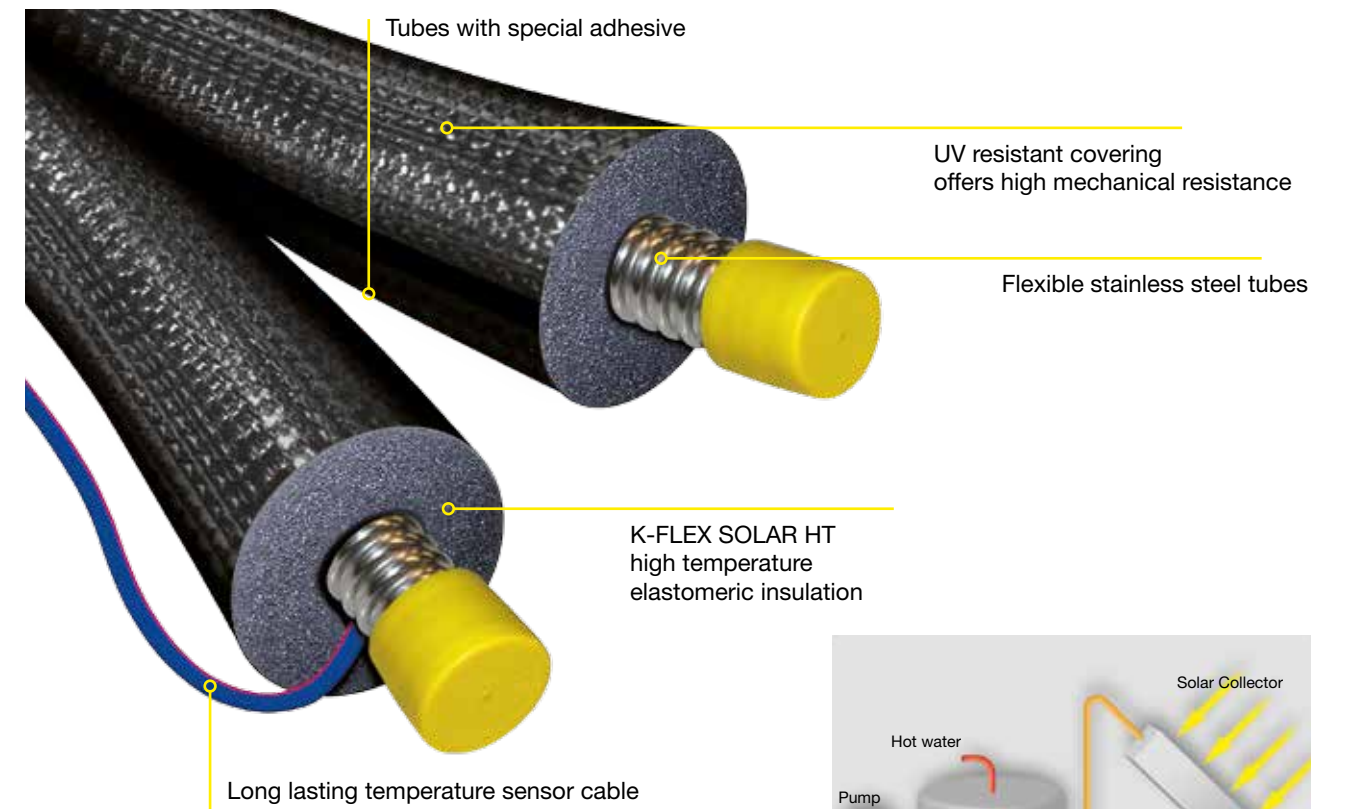
Material	AISI 316 L				
	Ext.Ø (mm)	DN	Thickness (mm)	Max service pressure (bar)	Bend radius (mm)
21,3 ±0,2	16	0,18	16	25	
26,4 ±0,2	20	0,18	10	30	
31,8 ±0,4	25	0,20	10	35	

TECHNICAL DATA ▶ TEMPERATURE SENSOR WIRE

Temperature Range	From -60 °C to +200 °C
Flexible Copper Ø 1 mm	CEI 20 - 19/15
Wire Insulation	Silicon Rubber
Rated Voltage	300/500 V
Electrical Resistance	20.0 Ohm/km

K-FLEX reserves the right to change data and technical requirements without notice.

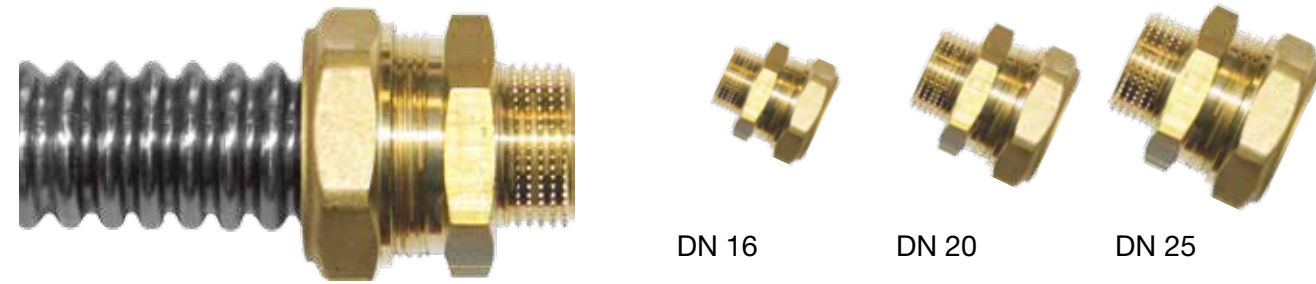
K-FLEX ▶ TWIN SOLAR SYSTEM



RANGE ▶ K-FLEX TWIN SOLAR SYSTEM

	STEEL TUBES		INSULATION Thickness	TUBE LENGTH			
	O.D.	Wall Thickness		10 m	15 m	20 m	25 m
K-FLEX TWIN SOLAR SYSTEM DN16	21,3 ±0,2 mm	0,18 mm	14 mm	•	•	•	•
	21,3 ±0,2 mm	0,18 mm	20 mm	•	•	•	•
K-FLEX TWIN SOLAR SYSTEM DN20	26,4 ±0,2 mm	0,18 mm	14 mm	•	•	•	•
	26,4 ±0,2 mm	0,18 mm	20 mm	•	•	•	•
K-FLEX TWIN SOLAR SYSTEM DN25	31,8 ±0,4 mm	0,20 mm	14 mm		•	•	•
	31,8 ±0,4 mm	0,20 mm	20 mm		•	•	•

COMPRESSION QUICK COUPLING ▶ K-FLEX TWIN SOLAR SYSTEM



Quick assembly without the need for tools or special equipment. Simple metal to metal seal.

Meets safety requirements and enhances performance by eradicating assembly mistakes.

▶ EXTERNAL THREAD COUPLING

DESCRIPTION

- External Thread 1/2" DN16
- External Thread 3/4" DN16
- External Thread 3/4" DN20
- External Thread 1" DN20
- External Thread 1 1/4" DN25

▶ INTERNAL THREAD COUPLING

DESCRIPTION

- Internal Thread 1/2" DN16
- Internal Thread 3/4" DN16
- Internal Thread 3/4" DN20
- Internal Thread 1" DN20

▶ COUPLING WITH CU CLAMPING RING

DESCRIPTION

- Connection system Steel DN 16 Copper Ø 15 mm
 - Connection system Steel DN 16 Copper Ø 18 / 22 mm*
 - Connection system Steel DN 20 Copper Ø 18 / 22 mm*
 - Connection system Steel DN 25 Copper Ø 18 / 22 mm*
- * Copper connection Ø 18 or 22 mm

▶ DOUBLE COUPLING

DESCRIPTION

- Double Coupling system DN 16 - DN 16
- Double Coupling system DN 20 - DN 20
- Double Coupling system DN 25 - DN 25

▶ STRAIGHT FITTING

DESCRIPTION

- DN 16 - Straight fitting Ø 22 mm
- DN 20 - Straight fitting Ø 22 mm
- DN 25 - Straight fitting Ø 22 mm
- DN 16 - Straight fitting Ø 18 mm
- DN 20 - Straight fitting Ø 18 mm
- DN 25 - Straight fitting Ø 18 mm

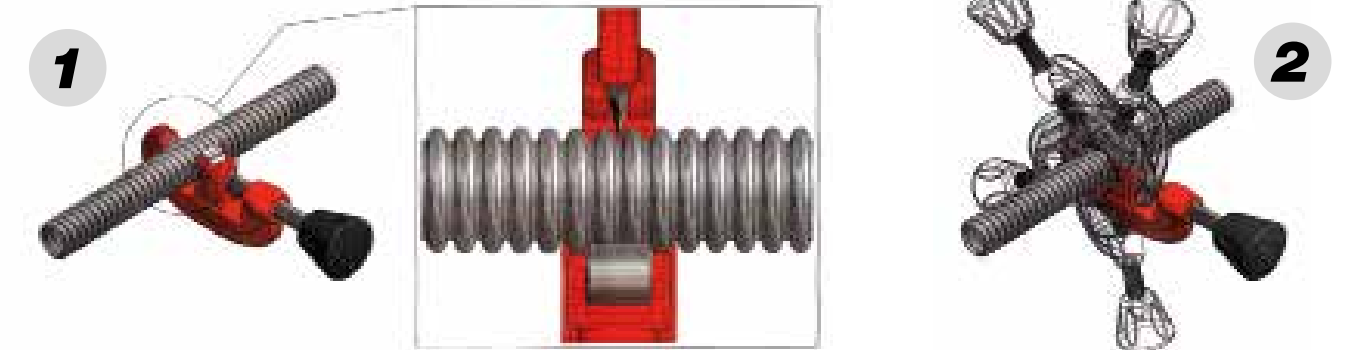
▶ OLIVE

DESCRIPTION

- Olive for compression coupling DN 16
- Olive for compression coupling DN 20
- Olive for compression coupling DN 25

COMPRESSION QUICK COUPLING ▶ ASSEMBLING

Place the blade in the groove perpendicularly the pipe.

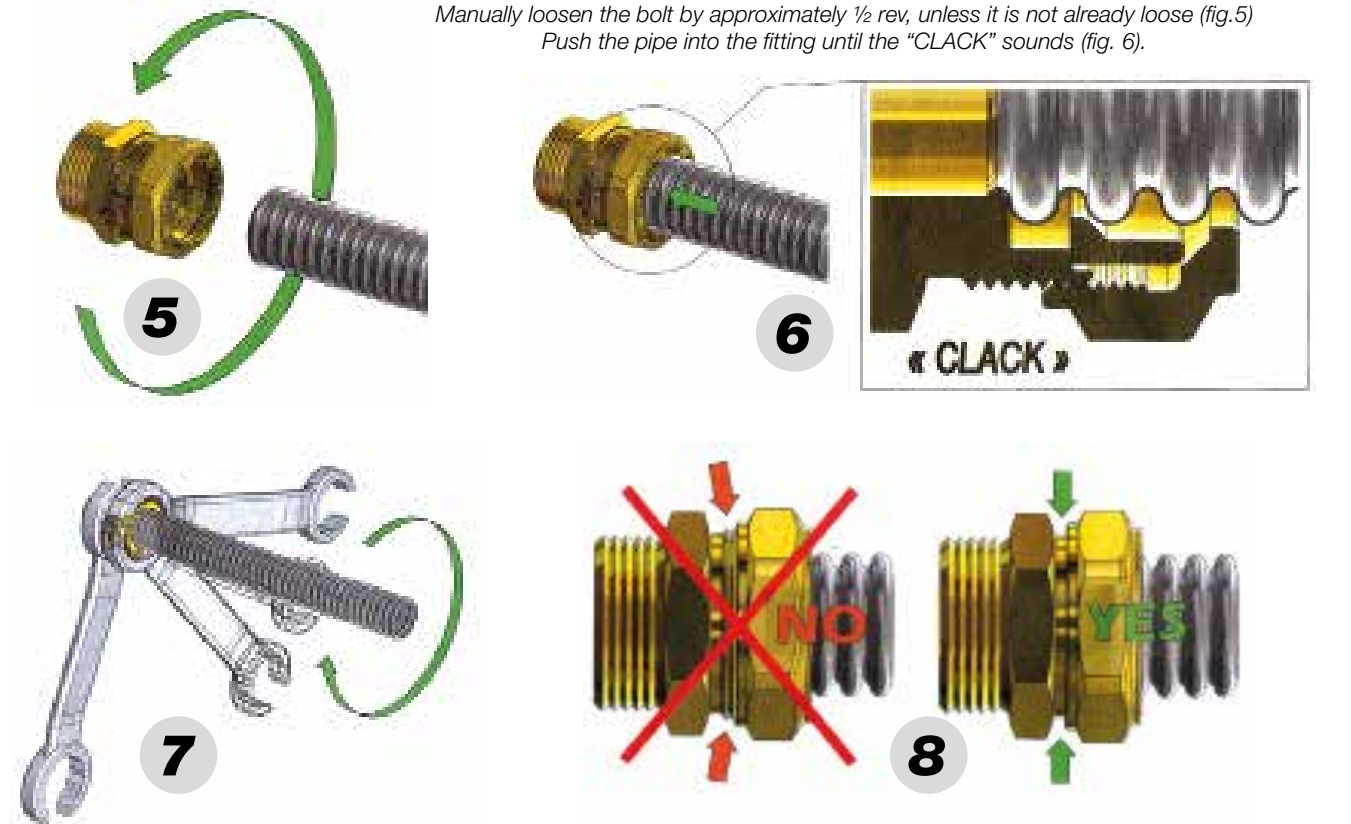


The cut must be clean and without burrs.

Do not disassemble the fitting: should this accidentally occur, the fool of the inner ring must be rested on the fitting body.



Manually loosen the bolt by approximately 1/2 rev, unless it is not already loose (fig.5)
Push the pipe into the fitting until the "CLACK" sounds (fig. 6).



K-FLEX TWIN SOLAR SYSTEM ▶ ACCESSORIES



Flange Tool

Tube Clamp

Nipple, Nut, Split Ring and Gasket

Oval Pipe Support